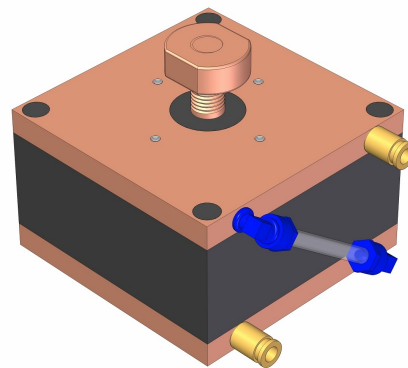
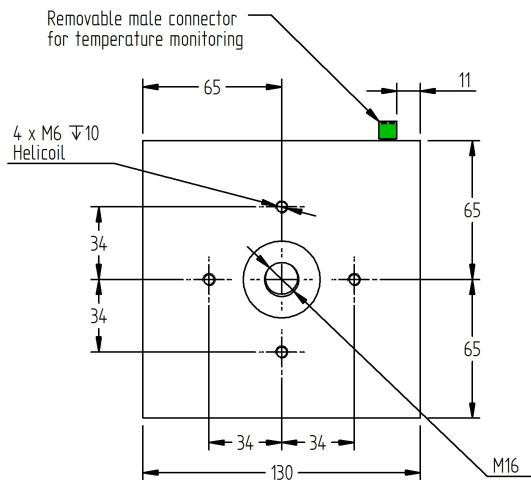
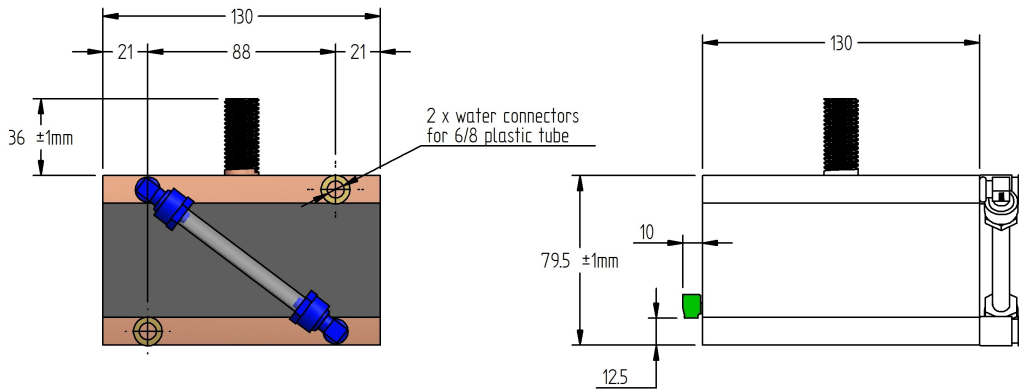


C-CAP 05

Water-cooled capacitor



Technology Patented Worldwide



C-Cap is a new innovative capacitor that was developed by Celem. It is protected by US Patent 9799454 and US Patent 9865398.

- Temperature switch: Normally Closed, 24V, 1A, recommended wire size 16-28AWG. Opens at 55°C.
- Mounting: Recommended torque for M16: 8-10 Nm, recommended torque for M6: 5Nm. Celem can supply designated bus-bars.
- Cooling: Maximal inlet pressure 6 Bar, maximal outlet temperature: 45°C. It is possible to get 4 straight water connectors.

For additional information please see technical notes at www.celem.com.

Specifications

Type		C-CAP 05						
Dimensions (L x W x H)	mm	130 x 130 x 79.5						
Weight	kg	4.5						
Capacitance (±10%)	µF	5µF	9µF	14µF	19µF	27µF	46µF	85µF
Sinusoidal Voltage	V _{rms}	900	800	750	700	650	550	500
Peak_Voltage	V	1273	1131	1061	990	919	778	707
Max. Current	A _{rms}	1700	1900	2200	2400	2500	2600	3000
Max. Power	kVA _r	1200						
Freq Range @ Half Power	kHz	24-109	16.4-76	11.8-61	9.8-45	9-38	7.2-27	5.6-19.6
Freq Range @ Full Power	kHz	47-77	33-53	24-46	21-40	16.8-31	13.7-19.5	9-14.1

Celem Power Capacitors

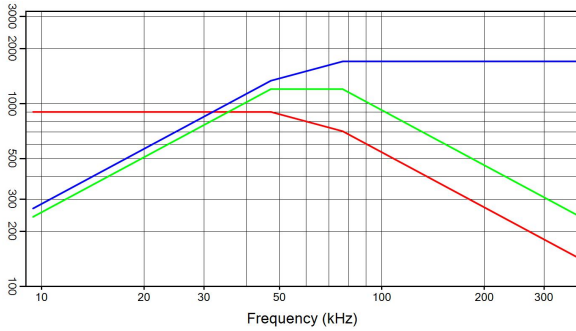
Produced: 19-05-2019

C-CAP 05

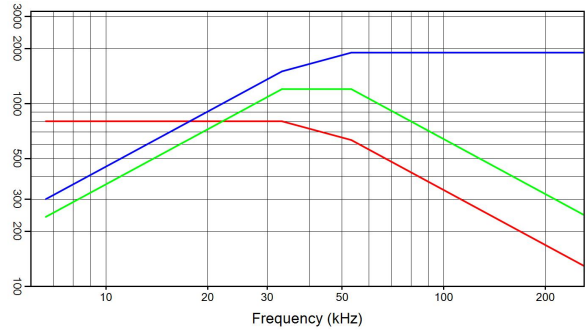
Water-cooled capacitor



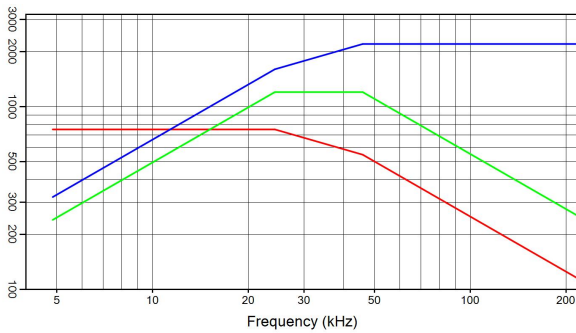
Technology Patented Worldwide



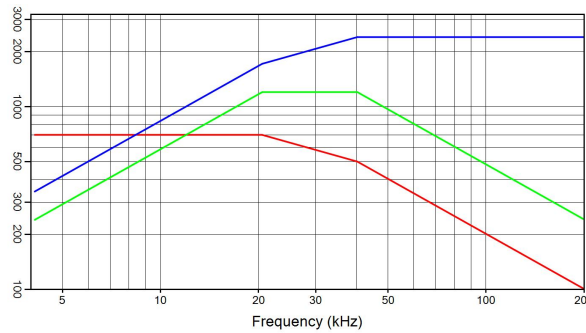
C-CAP 05 5 µF 900 V_{rms} 1700 A_{rms} 1200 kVA_r
 I(A) — Q(kVA_r) — V_{rms} —



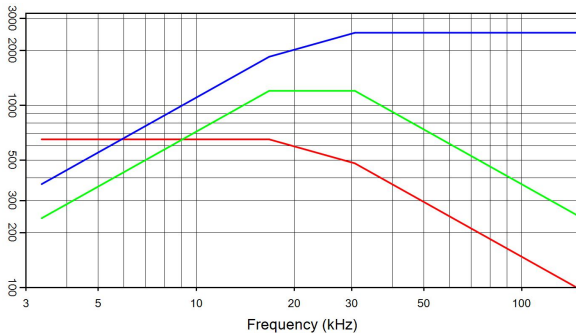
C-CAP 05 9 µF 800 V_{rms} 1900 A_{rms} 1200 kVA_r
 I(A) — Q(kVA_r) — V_{rms} —



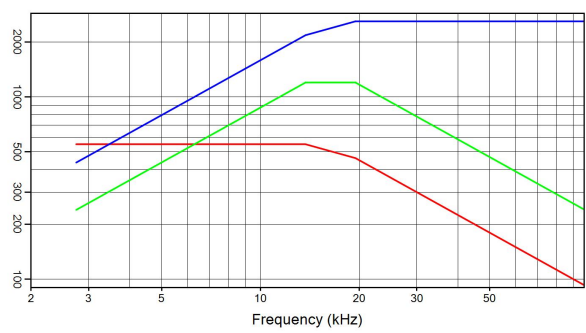
C-CAP 05 14 µF 750 V_{rms} 2200 A_{rms} 1200 kVA_r
 I(A) — Q(kVA_r) — V_{rms} —



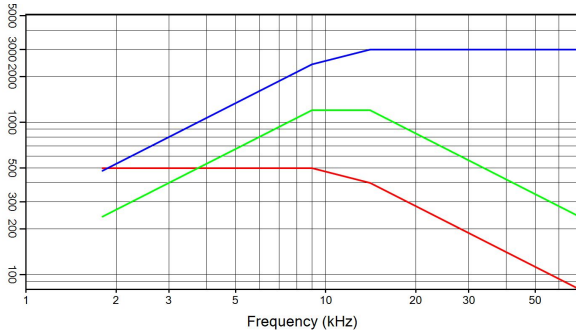
C-CAP 05 19 µF 700 V_{rms} 2400 A_{rms} 1200 kVA_r
 I(A) — Q(kVA_r) — V_{rms} —



C-CAP 05 27 µF 650 V_{rms} 2500 A_{rms} 1200 kVA_r
 I(A) — Q(kVA_r) — V_{rms} —



C-CAP 05 46 µF 550 V_{rms} 2600 A_{rms} 1200 kVA_r
 I(A) — Q(kVA_r) — V_{rms} —



C-CAP 05 85 µF 500 V_{rms} 3000 A_{rms} 1200 kVA_r
 I(A) — Q(kVA_r) — V_{rms} —

Celem Power Capacitors

Produced: 19-05-2019